

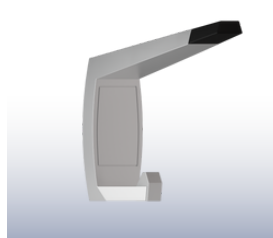


## Ambulant Toilet Cubicle Package in Satin Stainless Steel

Ambulant Toilet Cubicles are designed for people with disabilities such as those using crutches or walking frames, or those with sensory loss or arthritis. In male and female facilities with more than one standard cubicle, at least one must be suitable for use by a person with an ambulant disability.



**Sera Emergency Release Lock & Indicator Set**  
Code: SERA\_ERLOCK\_SS



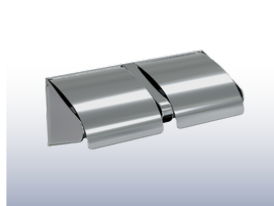
**Moda Hat & Coat Hook**  
Code: MODA\_HOOK\_SCP



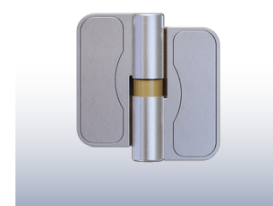
**Moda Bumper**  
Code: MODA BUMPMKII\_SCP



**90° Ambulant Grab Rail 450mm x 450mm**  
Code: MLR1122\_SS



**Lockable Hooded Double Toilet Roll Holder**  
Code: ML271\_TRH\_PSS



**Moda Gravity Hinge**  
Code: MODA\_GRAVITY\_SCP



**Aluminium Cubicle Leg**  
Code: 120-Series



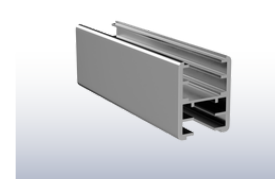
**D Handle with Rubber Stopper**  
Code: ML315R



**Female Ambulant Toilet Sign**  
Code: MLS16266



**Male Ambulant Toilet Sign**  
Code: MLS16246



**Universal Head Rail Channel**  
Code: UNICH\_36